
CURIO-HAUS | Hamburg



BERLIN DÜSSELDORF FRANKFURT HAMBURG MÜNCHEN

INDEX

_Curio-Haus	3 - 6
_Floor plans with pictures	7 - 10
_Basic data and capacity	11 - 12
_Location prices Curio-Haus	13
_Contact	14



EXTERIOR VIEW



CURIO-HAUS

The Curio-Haus is one of the most famous venues in Hamburg, located in the district Eimsbüttel, more precisely Rotherbaum, one of the most representative and most beautiful quarters of Hamburg.

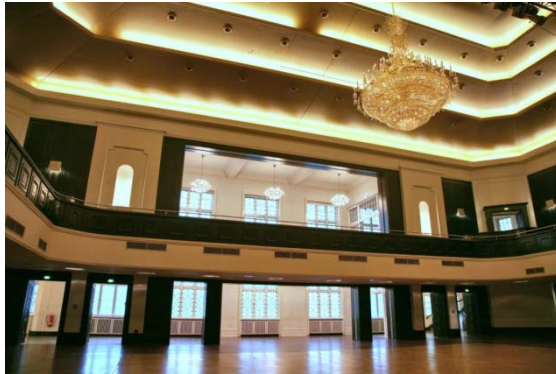
The building was constructed in the year 1911 and provides a history of nearly 100 years. In the 1920's it was a meeting point for the artist scene. While the Ballroom was barely affected by bomb damage during World War I, it served as a courtroom for war criminal tribunals of the British court-martial from 1946 till 1948. After its return in the year 1950 the Curio-Haus was used as cafeteria of the adjoining university. Thereafter it was relegated in its historical state and is used as event location ever since.

The different classy rooms in diverse dimensions and accoutrements, which can be individually adjusted to your needs by decoration and seating, are the right surrounding for cultural events, presentations, conferences, general business meetings or Gala events.

The Curio-Haus, which was inherited by Kofler & Kompanie in September 2004 features a perfect symbiosis between a historical monument and a unique venue which is now to be presented afresh to its guests in its original valence.



PREMISES



The White Hall

Mother Theresa sanctified this hall in 1973. The White Hall is spatially a bit smaller than the ballroom. Just as the ball room it has an own gallery on the first floor and an integrated stage. For bigger events the conference room A and the amply bar on the ground floor can complement the hall. Also, the foyers on the ground floor and first floor amplify the event area.

The Ballroom

The core of the Curio-Haus is the ballroom with its own gallery on the first floor and its spacious stage.

An impressive crystal chandelier composes the centre of the hall which underlines the elegant character of the building. To be able to create a festive light atmosphere during daytime the hall can be completely darkened in a few seconds.



PREMISES



Foyers

The foyers, which extend themselves over four floors can be used as areal supplement e.g. as buffet area or as exhibition space for product presentations. They create a large ambiance and are suitable as self-contained event area, to create an enjoyable atmosphere in the beginning of the evening, before you adjourn to the hall for the apex of the evening.

KOCHLABOR

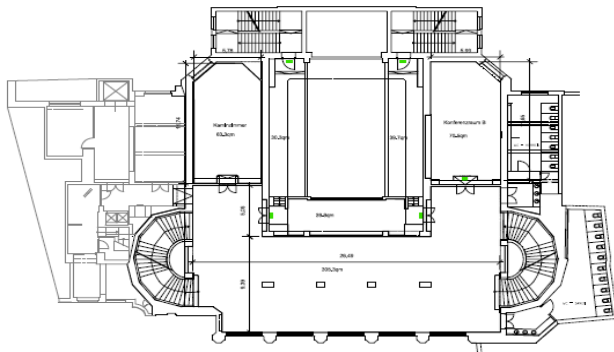
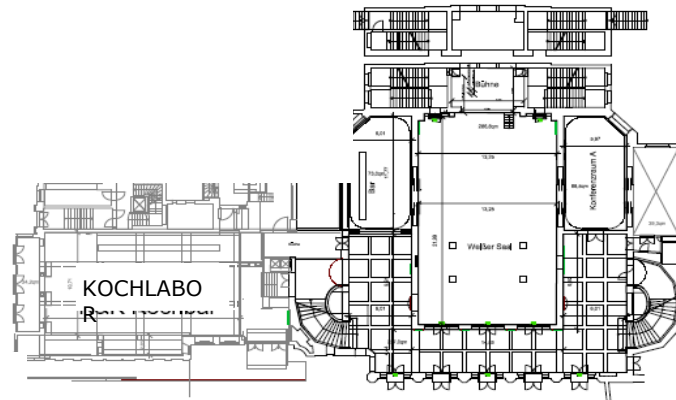
The Event-Kitchen of our KOCHLABOR in the Curiohaus, furnished with exclusive Poggenpohl-furniture and latest Gaggenau-equipment, offers the alternative for individual event concepts. In the KOCHLABOR show-kitchen, the guest has the direct contact to the chefs! You can decide - whether you join the cooking or »just« let yourself be spoiled culinary.



FLOOR PLANS

Floor plan ground floor & KOCHLABOR

- Conference room A
- White Hall
- Foyer with bar



Floor plan first floor

- Galery White Hall
- Conference room B
- Stack room
- Foyer first floor



IMPRESSIONS GROUND FLOOR



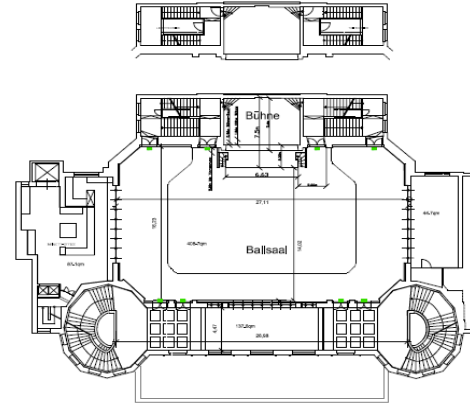
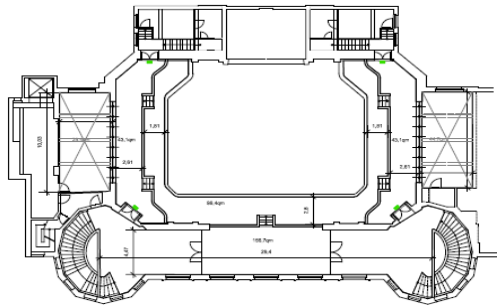
IMPRESSIONS KOCHLABOR



FLOOR PLANS

Floor plan second floor

- lower level Ballroom
- Foyer Ballroom



Grundriss third room

- Galery Ballroom
- Foyer Ballroom
- additional premises (artist cloakroom)



IMPRESSIONS



BASIC DATA

Location:	District Rotherbaum in the Hanseatic city Hamburg, (central position)
	Rothenbaumchaussee 11 20148 Hamburg
Square metres:	Generous foyer on the ground floor approx. 250 m ² Ball hall with gallery and integrated stage approx. 950 m ² Foyer on the first floor approx. 300 m ² White hall with integrated stage approx. 300 m ²
Ceiling hight ball hall I:	approx. 2,53 – 11,40 metres
Ceiling White hall:	approx. 7,60 metres
Technical partner:	Neumann & Müller Veranstaltungstechnik Mr Stephan Werner Berzeliusstraße 19, 22113 Hamburg
	Tel: +49 40 25 40 49 14 Email: curiohaus@NeumannMueller.com



BASIC DATA

Capacity Ballroom:	up to 250 guests with banquet seating on the ground floor (ten guests per table) up to 420 guests with theatre seating on the ground floor up to 550 guests with theatre seating on the ground floor and gallery
Capacity White Hall:	up to 160 guests with banquet seating (ten guests per table) up to 246 guests with theatre seating on the ground floor up to 352 guests with theatre seating on the ground floor and gallery
Hotels:	Only approximately 3 minutes walk from the Elysee Hotel and only a few minutes drive by car to the Kempinski Hotel Atlantic, Le Royal Meridien, Hotel InterContinental und Radisson SAS
Usage:	All day usage possible
Access for guests:	Directly in front of the building
Delivery:	Goods receiving department Kofler & Kompanie
Catering:	Kofler & Kompanie AG



BASIC DATA KOCHLABOR

Square metres:	180 m ²
Capacity	Standing / sitting: up to 120 guests sitting: up to 83 guests cookery course: up to 20 guests
Equipment	granite kitchen & bar by Poggenpohl with modern kitchenware by GAGGENAU, climate wine cabinet and also a lounge
Usage:	All day usage possible
Access for guests:	Directly in front of the building
Delivery:	Goods receiving department Kofler & Kompanie
Location price:	€ 1.500,00 with a turnover above € 5,000 there will be no cost for rent



Location prices Curio-Haus

Ballroom and Galery		Euro 3.900,00
White Hall		Euro 2.250,00
Foyer White Hall		Euro 1.100,00
Foyer first floor		Euro 1.500,00
Lounge rooms	each	Euro 300,00
Curio- Haus, complete		Euro 7.500,00

For setup and cutback days we charge 50 % of the location price.

Heating, air conditioning and energy costs are not included in the location price.

All of the prices are net-prices, not including the 19% goods and services tax.



KOFLER & KOMPANIE
INTERNATIONAL CATERER

Your contact:

Kofler & Kompanie AG

Rothenbaumchaussee 11

20148 Hamburg

Fon +49 40 36 11 16 -0

Fax +49 40 36 11 16 -11

hamburg@koflerkompanie.com

www.koflerkompanie.com

