

Weisses Haus | Wiesbaden



Weisses Haus

THE HISTORY

2

The „weiße Haus“ was built in 1903 by order of the champagne producers Friedrich Wilhelm Söhnlein and his wife Emma Papst, who came from an American brewery – family.

Friedrich Wilhelm Söhnlein let the mention built after the example of the white house in washington to give his wife the feeling of home.
That is the reason for the name of that location.

The affinity to the American president residence is apparently one of the reasons why the American military agency took over the mention in 1945 and used it until 1990 as the head quarter of their base.

The Villa had a music- and theater hall, in which, among others, Elvis Presley performed during his military service in Germany.

In 1995 the Villa was turned over to the Hessian state government and used as one of their satellites of the state chancellery.

The Hessian state decided to sell the villa and so it is held by family Müller since 2005.

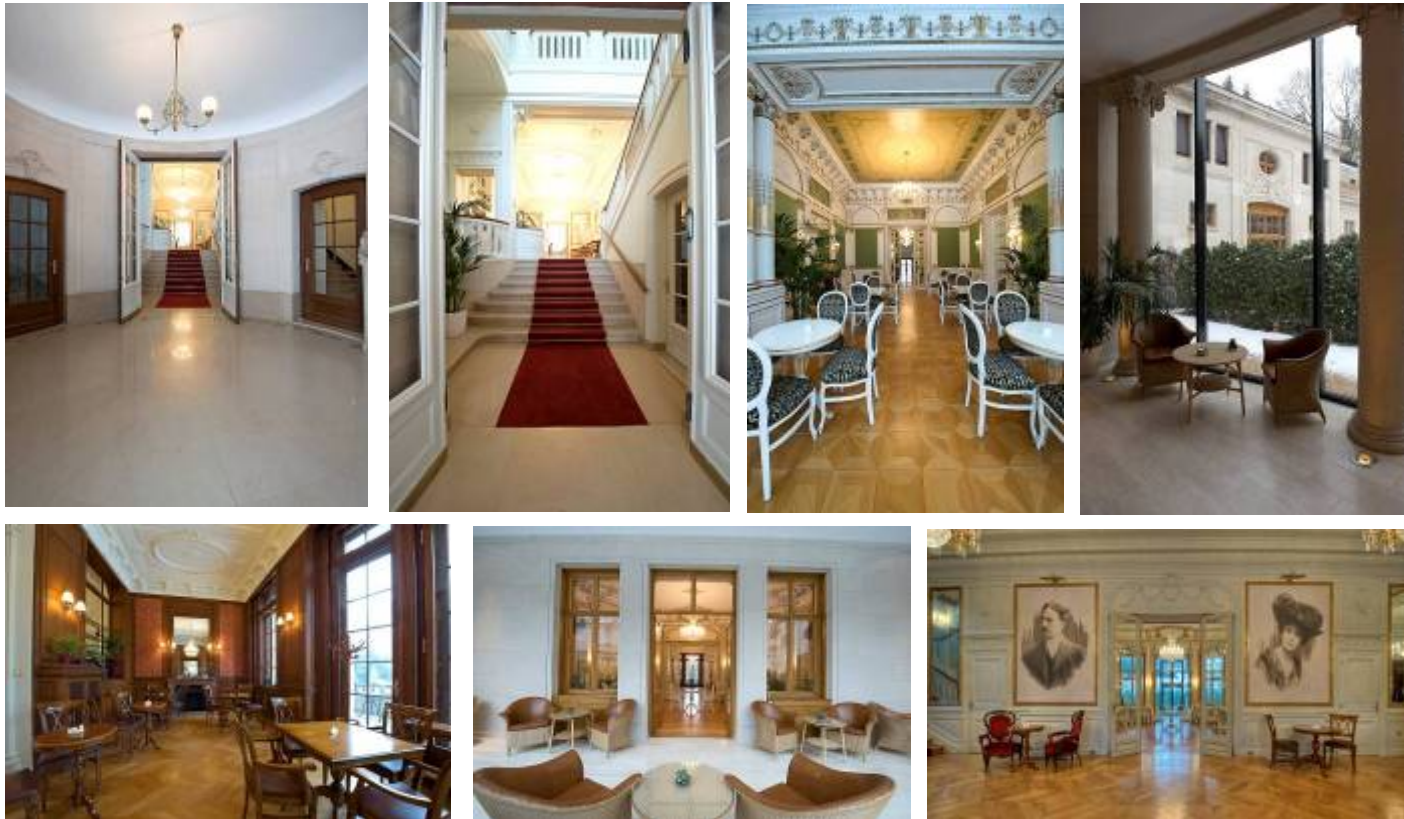
From 2006 to 2009 the mention was renovated carefully and original.



Weisses Haus
IMPRESSIONS



Weisses Haus
IMPRESSIONS



KOFLER & KOMPANIE

INTERNATIONAL CATERER

Weisses Haus IMPRESSIONS

5



BERLIN DÜSSELDORF FRANKFURT HAMBURG MÜNCHEN

Weisses Haus
LOCATION OVERVIEW



Weisses Haus
RENTAL CONDITIONS & CAPACITY

7

The rental is net, excluding additional expenses.

up to 40 guests	2.500,00 € net/day
up to 80 guests	3.500,00 € net/day
over 80 guests	4.500,00 € net/day

large hall	64,82 qm
small hall	48,92 qm
ladies room	39,66 qm
music room	46,00 qm
dining room	44,22 qm
winter garden	34,04 qm



total capacity	approximately 100 guests seated on round tables approximately 200 guest stand up reception
----------------	---



Your contact:

Kofler & Kompanie AG

Palais im Zoo
Bernhard-Grzimek-Allee 1
D - 60316 Frankfurt am Main

Fon: +49 [0]69 | 94 35 08 - 0

Fax: +49 [0]69 | 94 35 08 - 22

Email: frankfurt@koflerkompanie.com

www.koflerkompanie.com

